

# Basic Report

---



**Title:** Penitente Procession

**Date:** circa 1925

**Primary Maker:** Ernest L. Blumenschein

**Medium:** ink, watercolor, Chinese white on paper mounted on paper



**Title:** Horse Drawn Wagon in Picuris

**Date:** n.d.

**Primary Maker:** Ernest L. Blumenschein

**Medium:** pencil on paper mounted on cardboard



**Title:** Head of a Bear

**Date:** circa 1900

**Primary Maker:** Ernest L. Blumenschein

**Medium:** ink and pencil on paper



**Title:** Adam and Eve in a Mountain Landscape

**Date:** n.d.

**Primary Maker:** Ernest L. Blumenschein

**Medium:** gouache, ink and pencil on board

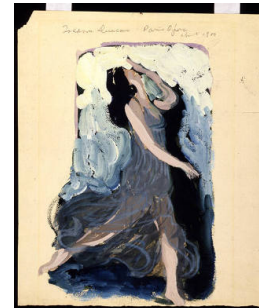


**Title:** The Long Walk of the Navajos

**Date:** n.d.

**Primary Maker:** Ernest L. Blumenschein

**Medium:** graphite on cardboard



**Title:** Isadora Duncan - Paris Opera

**Date:** circa 1900

**Primary Maker:** Ernest L. Blumenschein

**Medium:** gouache on laid paper



**Title:** On the Museum Steps  
**Date:** 1893  
**Primary Maker:** Ernest L. Blumenschein  
**Medium:** Ink on wove paper



**Title:** Rue Blainville, Paris  
**Date:** circa 1895  
**Primary Maker:** Ernest L. Blumenschein  
**Medium:** ink and pencil on paper



**Title:** Untitled (Adam and Eve in Forest)  
**Date:** n.d.  
**Primary Maker:** Ernest L. Blumenschein  
**Medium:** ink and pencil on paper mounted on board



**Title:** Paris  
**Date:** circa 1895  
**Primary Maker:** Ernest L. Blumenschein  
**Medium:** ink and pencil on paper