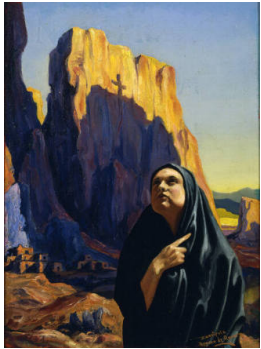
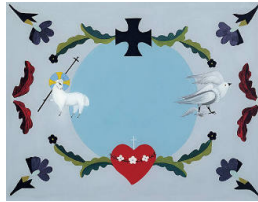


Basic Report



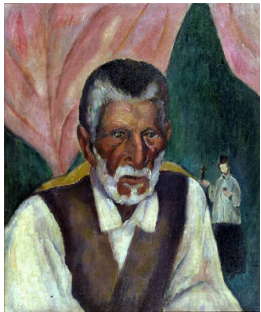
Title: The Black Shawl
Date: 1933
Primary Maker: Esquípula Romero de Romero
Medium: oil on Masonite



Title: Divine Lamb and Taos Blue Sky
Date: n.d.
Primary Maker: Rebecca Salsbury (Strand) James
Medium: Reverse painting on glass



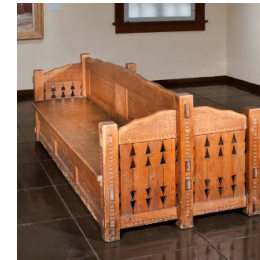
Title: Dark and Lavender Leaves
Date: 1931
Primary Maker: Georgia O'Keeffe
Medium: oil on canvas



Title: The Sacristan of Trampas
Date: 1918
Primary Maker: Paul Burlin
Medium: oil on canvas



Title: Untitled
Date: May 7, 1981
Primary Maker: Juan B. Hamilton
Medium: bronze



Title: Spanish Colonial /Pueblo Revival Double Bench
Date: circa 1929
Primary Maker: Sam F. Hudelson
Medium: pine



Title: Ann Carol with Iris
Date: 1943
Primary Maker: Henriette Wyeth
Medium: oil on canvas



Title: Taos Pueblo - Moonlight
Date: 1914
Primary Maker: E. Irving Couse
Medium: oil on canvas



Title: The Stoic
Date: 1914
Primary Maker: Joseph Henry Sharp
Medium: oil on canvas



Title: Grief

Date: 1917

Primary Maker: Warren E.
Rollins

Medium: oil on canvas