

Basic Report



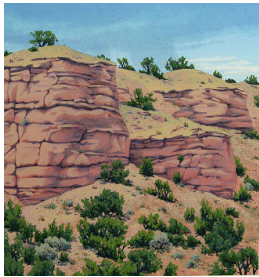
Title: Twelve Months - April (Morning--Tesuque)
Date: 1989
Primary Maker: Kate Krasin
Medium: Serigraph



Title: Twelve Months - September (Roadside)
Date: 1989
Primary Maker: Kate Krasin
Medium: Serigraph



Title: Twelve Months - December (Winter Solstice)
Date: 1988
Primary Maker: Kate Krasin
Medium: Serigraph



Title: Twelve Months - June (Summer Storm - Nambe)
Date: 1989
Primary Maker: Kate Krasin
Medium: serigraph



Title: Twelve Months - February (Black Mesa from the Rio Grande)
Date: 1990
Primary Maker: Kate Krasin
Medium: serigraph



Title: Twelve Months - January (Morning Mist--Tsankawi)
Date: 1989
Primary Maker: Kate Krasin
Medium: Serigraph



Title: Title Page (from the portfolio The Quest)
Date: n.d.
Primary Maker: Kate Krasin
Medium: relief print



Title: Contents Page (from the portfolio The Quest)
Date: n.d.
Primary Maker: Kate Krasin
Medium: relief print



Title: Mirage (from the portfolio The Quest)
Date: n.d.
Primary Maker: Kate Krasin
Medium: silkscreen print by Kate Krasin based on drawings by Peter Rogers



Title: Flight (from the portfolio The Quest)

Date: n.d.

Primary Maker: Kate Krasin

Medium: silkscreen print
by Kate Krasin based on
drawings by Peter Rogers