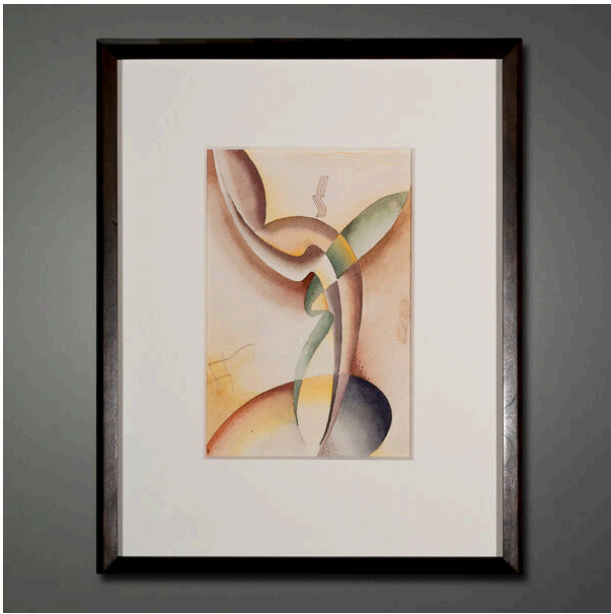


Basic Detail Report



13 1/2 x 3/4 in. (41.9 x 34.3 x 1.9 cm)

No. 32 (study for Composition No. 57)

Date
circa 1937

Primary Maker
Stuart Walker

Medium
watercolor

Description
Abstract image in pink, yellow, green and purple.

Dimensions
Support: 9 1/2 x 6 1/2 in. (24.1 x 16.5 cm) Frame: 16 1/2 x