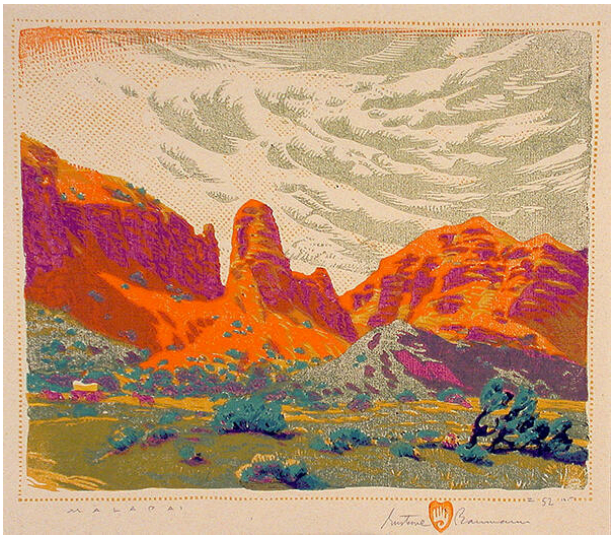


# Basic Detail Report

---



## Malapai

**Date**

1927

**Primary Maker**

Gustave Baumann

**Medium**

Color woodcut

**Description**

Landscape; purple and orange rock cliffs in background, green grasses and shrubs in foreground; two horses and

wagon at lower left edge of image.

**Dimensions**

Image: 9 3/8 x 11 1/4 in. (23.8 x 28.6 cm) Support: 13 1/2 x 17 in. (34.3 x 43.2 cm) Mat: 20 x 22 in. (50.8 x 55.9 cm)