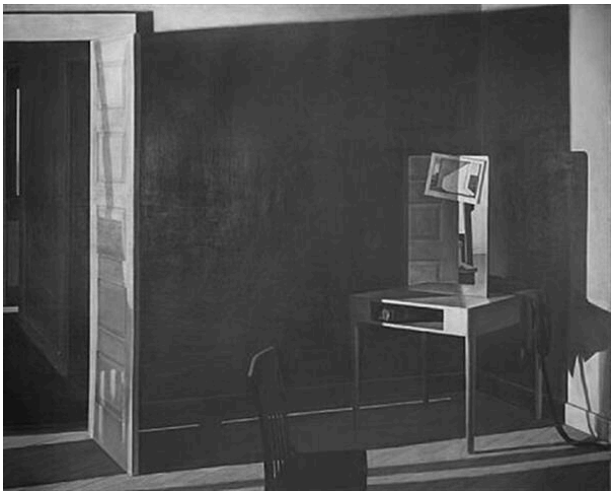


Basic Detail Report



Rooms

Date

1982

Primary Maker

Richard Shaffer

Medium

drypoint and aquatint

Description

A desk stands in the corner of a room; the door stands

open; a chair is in the center foreground.

Dimensions

Image: 17 3/4 × 21 1/4 in. (45.1 × 54 cm) Plate Mark: 17 3/4 × 21 1/4 in. (45.1 × 54 cm) Support: 29 1/4 × 35 1/2 in. (74.3 × 90.2 cm) Frame: 35 1/4 × 38 3/8 × 1 5/8 in. (89.5 × 97.5 × 4.1 cm)