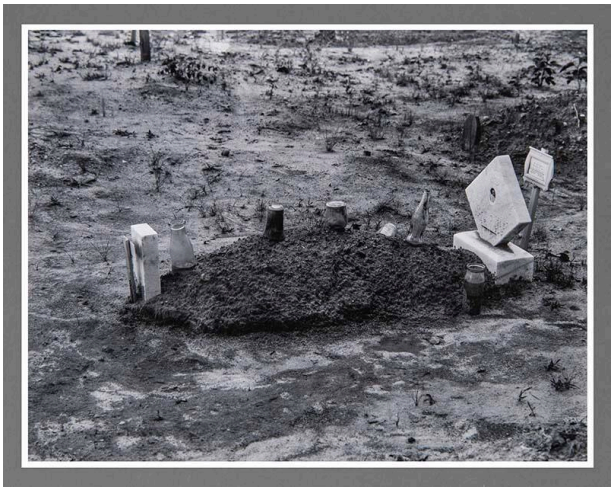


# Basic Detail Report

---



## Grave, Hale County, Alabama (frome Walker Evans, 14 Photographs, 1971)

**Date**  
1936 (printed 1971)

**Primary Maker**  
Walker Evans

**Medium**  
gelatin silver print

### Description

Image of a new gravesite with the dirt freshly overturned, small headstone and a flower at top.

### Dimensions

Image: 7 1/4 × 9 1/4 in. (18.4 × 23.5 cm) Support: 18 × 14 3/4 in. (45.7 × 37.5 cm)