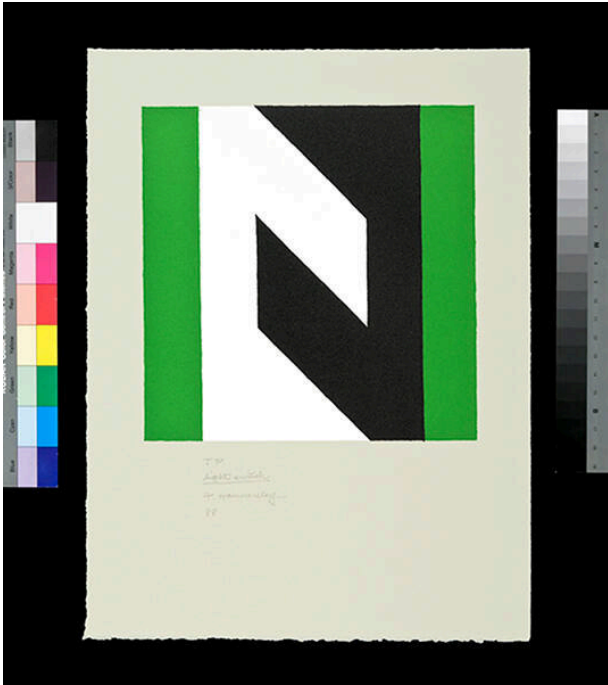


Basic Detail Report



Light switch

Date

1988 (March 14-May 2)

Primary Maker

Frederick Hammersley

Medium

lithograph

Description

Green background with white and black geometric shapes in center from top to bottom.

Dimensions

Image: 9 × 9 in. (22.9 × 22.9 cm) Support: 16 × 12 in. (40.6 × 30.5 cm) Mat: 24 × 20 in. (61 × 50.8 cm)