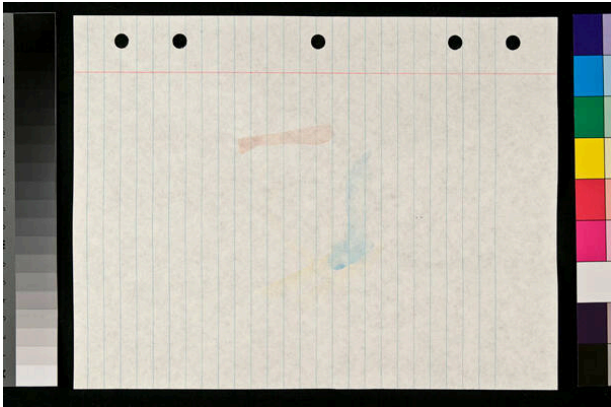


# Basic Detail Report

---



watercolor on paper

## Description

plotches of paint in brown and blue; very faint image

## Dimensions

Support: 10 1/2 x 8 in. (26.7 x 20.3 cm) Mat: 20 1/4 x 15 3/4 in. (51.4 x 40 cm) Frame: 20 15/16 x 16 3/8 x 1 1/16 in. (53.2 x 41.6 x 2.7 cm)

## Loose Leaf Notebook Drawings - Box 10, Group 5

### Date

1980-1982

### Primary Maker

Richard Tuttle

### Medium