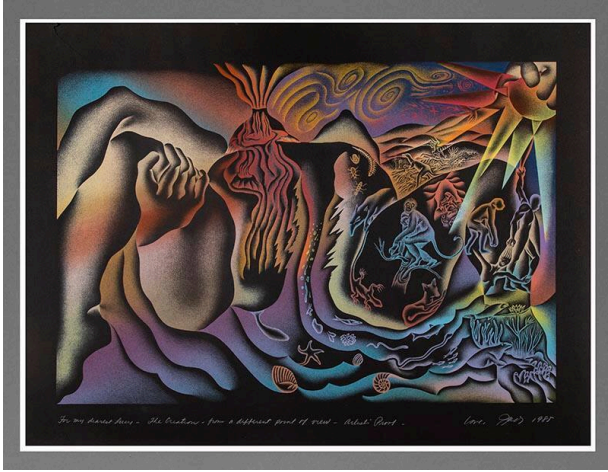


# Basic Detail Report

---



## The Creation from a Different Point of View

**Date**

1985

**Primary Maker**

Judy Chicago

**Medium**

Serigraph

### Description

Swirling shaded black lines drawing of arms, legs & hands as a landscape. Breasts as volcanoes, emerging from the sea, small figures march through from reptiles to humans. A hand at top R holds the sun; purple, orange & blue colors.

### Dimensions

Image: 24 × 35 in. (61 × 88.9 cm) Support: 30 × 40 in. (76.2 × 101.6 cm) Other (Support Paper is Taped to ): 34 1/4 × 45 3/8 in. (87 × 115.3 cm)