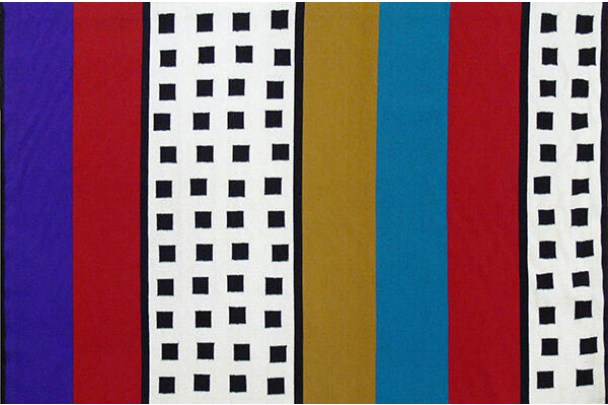


# Basic Detail Report

---



## Katsina 6

**Date**  
1989

**Primary Maker**  
Ramona Sakiestewa

**Medium**  
wool

### Description

Red, black and white squares, with green and purple wide stripes tapestry.

### Dimensions

47 1/2 x 74 1/2 in. (120.7 x 189.2 cm)