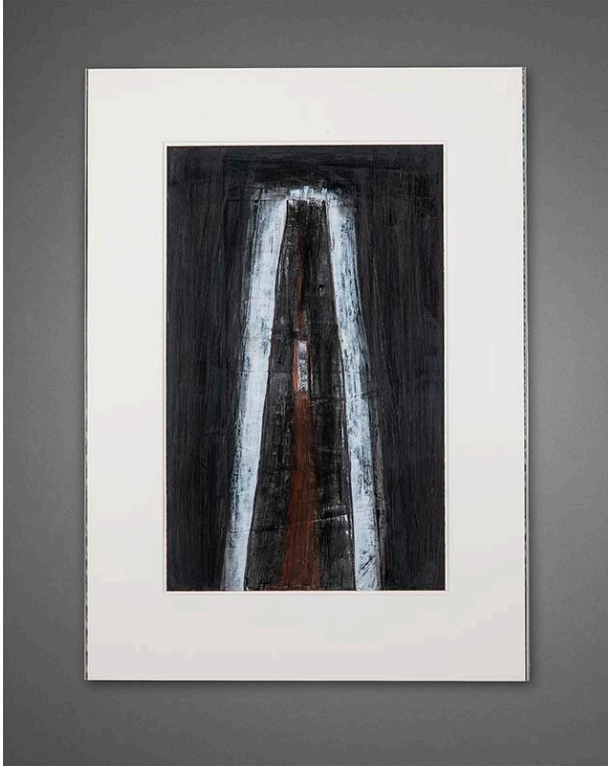


Basic Detail Report



(45.1 × 28.3 cm)

Fall

Date

1988

Primary Maker

Michael P. Berman

Medium

Acrylic, conte, mixed media

Description

Black background, white arch with black in center and red in center of black, small square in black and white in center.

Dimensions

Image: 17 1/2 × 10 7/8 in. (44.5 × 27.6 cm) Mat: 24 1/8 × 17 1/4 in. (61.3 × 43.8 cm) Support: 17 3/4 × 11 1/8 in.