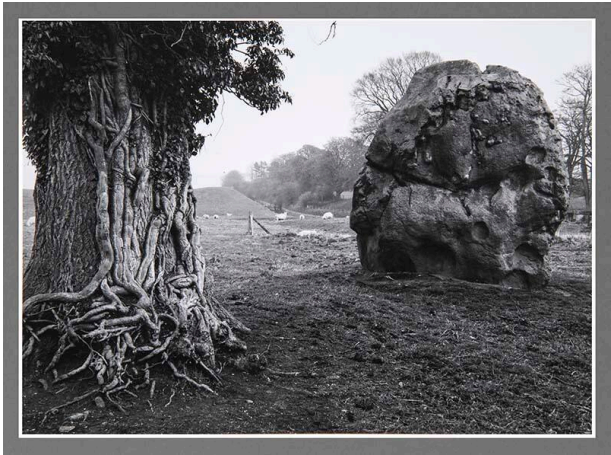


Basic Detail Report



Stone of North Circle, near the Cove, Avebury Stone Circle, (from Portfolio II)

Date

1967

Primary Maker

Paul Caponigro

Medium

gelatin silver print

Description

Large tree trunk with roots or vines growing on side facing viewer, large standing stone to its right. Pasture with white sheep, large mound, trees and stone fence in background.

Dimensions

Image: 6 7/8 x 9 1/2 in. (17.5 x 24.1 cm) Support: 15 x 18 in. (38.1 x 45.7 cm)