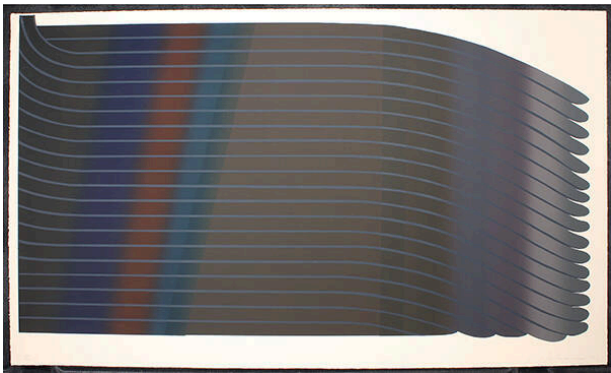


# Basic Detail Report

---



## Untitled

**Date**

1976

**Primary Maker**

Garo Z. Antreasian

**Medium**

lithograph

**Description**

A series of horizontal lines form a brushstroke-like configuration that tapers off at the right edge and ends a scallop pattern. The colors of the image gradually shift from one to another, starting with a deep charcoal gray at the left and ending in a silvery purple at the right. Dark blue, red and, teal stripes can be seen at the left.

**Dimensions**

Image: 22 7/16 × 43 15/16 in. (57 × 111.6 cm) Support: 24 × 46 in. (61 × 116.8 cm)