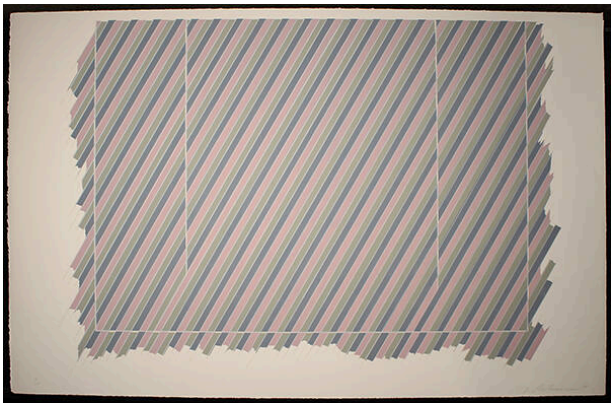


# Basic Detail Report

---



## Untitled

**Date**

1975

**Primary Maker**

Garo Z. Antreasian

**Medium**

lithograph

**Description**

A series of diagonal lines in light blue, light pink and light green form a large square at the center of the support. The top edge of the square is straight while the sides and bottom are the jagged edges of the stripes. A thin "U" shaped white line spans the left, right and bottom sections of the image. There are two vertical, thin white lines at the left and right.

**Dimensions**

Image: 28 × 39 in. (71.1 × 99.1 cm) Support: 30 1/4 × 46 in. (76.8 × 116.8 cm)