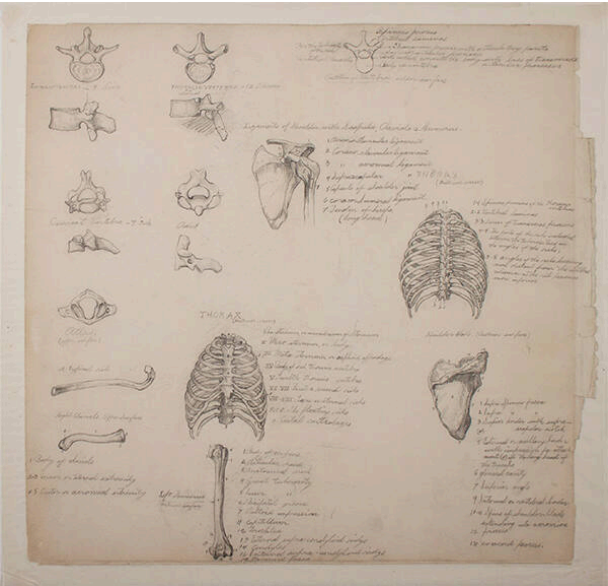


# Basic Detail Report



## 17 Sketches of Human Bones

**Date**  
circa 1912 - 1915

**Primary Maker**  
E. Martin Hennings

**Medium**  
Pencil on wove paper

**Description**  
17 sketches of bones: vertebra, humerus, shoulder blade, thorax. All bones are numbered and labeled in artist handwriting.

**Dimensions**  
Image: 16 1/2 × 16 1/4 in. (41.9 × 41.3 cm) Support: 17 1/4 × 18 in. (43.8 × 45.7 cm) Mat: 22 × 22 in. (55.9 × 55.9 cm)