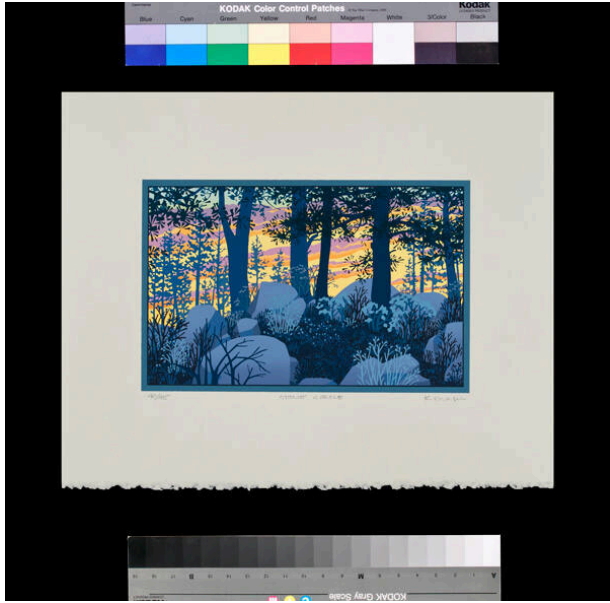


Basic Detail Report



Stone Circle

Date

1982

Primary Maker

Kate Krasin

Medium

silkscreen

Description

A circle of gray stones are surrounded by overgrown vegetation, the top faces of the stones which are closest to the viewer prominently dominate the foreground. Tall

and shadowed trees tower above the stone circle as the sun sets, painting the sky with yellow, orange, pink and purple hues.

Dimensions

Image: 5 7/8 x 9 1/8 in. (14.9 x 23.2 cm) Support: 11 1/8 x 13 7/8 in. (28.3 x 35.2 cm)