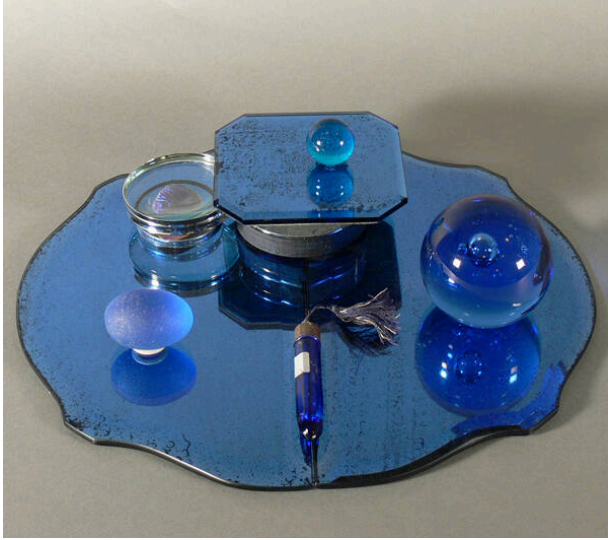


# Basic Detail Report

---



## An Evening in Paris

### Date

circa 2006

### Primary Maker

Gail Rieke

### Medium

Cobalt mirror glass, blue morpho butterfly, glass

### Description

Tabletop arrangements and assemblage that makes use of manmade and natural objects; monochromatic cobalt

blue consisting of paperweights, perfume bottle, blue morpho butterfly under magnifying glass and marbles.

### Dimensions

2 1/2 x 13 x 13 in. (6.4 x 33 x 33 cm) a: 1 1/16 x 15/16 in. (2.7 x 2.4 cm) b: 2 1/2 x 2 5/8 in. (6.4 x 6.7 cm) c: 5 7/8 x 9/16 x 9/16 in. (14.9 x 1.4 x 1.4 cm) d: 1 1/4 x 1 7/8 in. (3.2 x 4.8 cm) e: 1/4 x 1 7/8 in. (0.6 x 4.8 cm) f: 1 5/16 x 2 15/16 in. (3.3 x 7.5 cm) (f) opened: 1 5/16 x 5 1/4 x 2 15/16 in. (3.3 x 13.3 x 7.5 cm) g: 3 7/8 x 3 7/8 x 1/4 in. (9.8 x 9.8 x 0.6 cm) h: 10 7/8 x 5 7/8 x 1/4 in. (27.6 x 14.9 x 0.6 cm) i: 10 7/8 x 5 7/8 x 1/4 in. (27.6 x 14.9 x 0.6 cm)