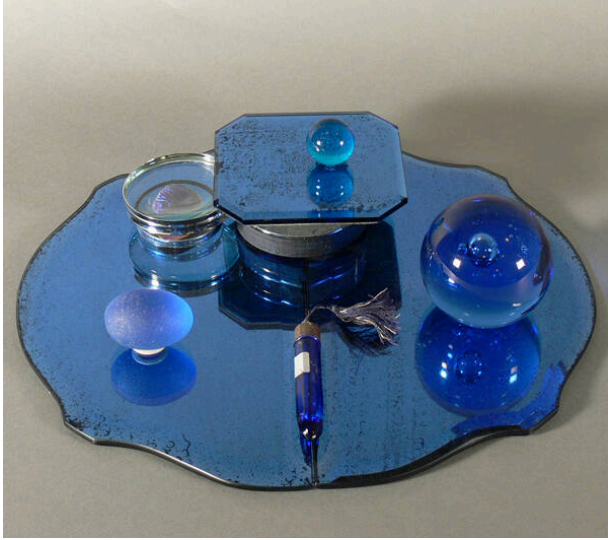


Basic Detail Report



An Evening in Paris

Date

circa 2006

Primary Maker

Gail Rieke

Medium

Cobalt mirror glass, blue morpho butterfly, glass

Description

Tabletop arrangements and assemblage that makes use of manmade and natural objects; monochromatic cobalt

blue consisting of paperweights, perfume bottle, blue morpho butterfly under magnifying glass and marbles.

Dimensions

2 1/2 x 13 x 13 in. (6.4 x 33 x 33 cm) a: 1 1/16 x 15/16 in. (2.7 x 2.4 cm) b: 2 1/2 x 2 5/8 in. (6.4 x 6.7 cm) c: 5 7/8 x 9/16 x 9/16 in. (14.9 x 1.4 x 1.4 cm) d: 1 1/4 x 1 7/8 in. (3.2 x 4.8 cm) e: 1/4 x 1 7/8 in. (0.6 x 4.8 cm) f: 1 5/16 x 2 15/16 in. (3.3 x 7.5 cm) (f) opened: 1 5/16 x 5 1/4 x 2 15/16 in. (3.3 x 13.3 x 7.5 cm) g: 3 7/8 x 3 7/8 x 1/4 in. (9.8 x 9.8 x 0.6 cm) h: 10 7/8 x 5 7/8 x 1/4 in. (27.6 x 14.9 x 0.6 cm) i: 10 7/8 x 5 7/8 x 1/4 in. (27.6 x 14.9 x 0.6 cm)