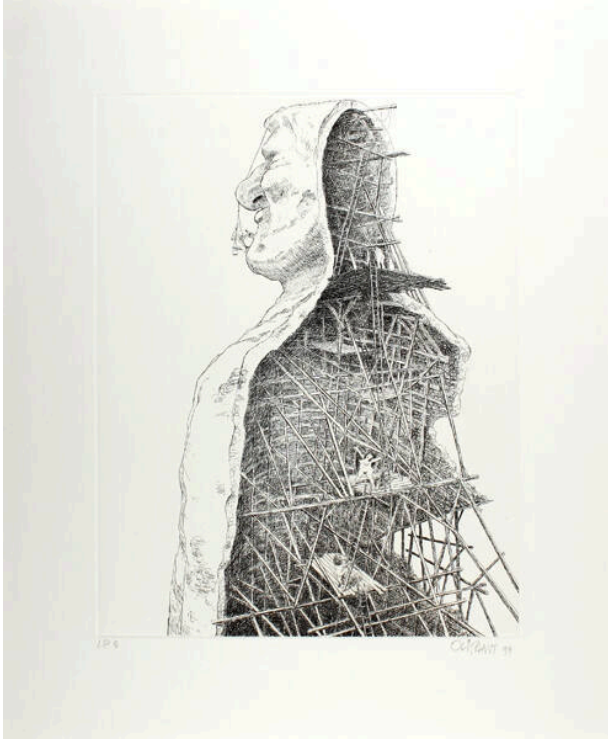


# Basic Detail Report

---



## Hollow Man

### Date

1999

### Primary Maker

Patrick Oliphant

### Medium

etching

### Description

A caricature statue of President Bill Clinton shown from a side angle with the finished facade at the front and the exposed interior aperture at the back. On the finished facade of the statue is a man suspended from the top painting the statue's chin. On the aperture side are three naked women posted at various locations.

### Dimensions

Plate Mark: 13 3/4 x 10 13/16 in. (34.9 x 27.5 cm) Support: 19 x 15 7/8 in. (48.3 x 40.3 cm)