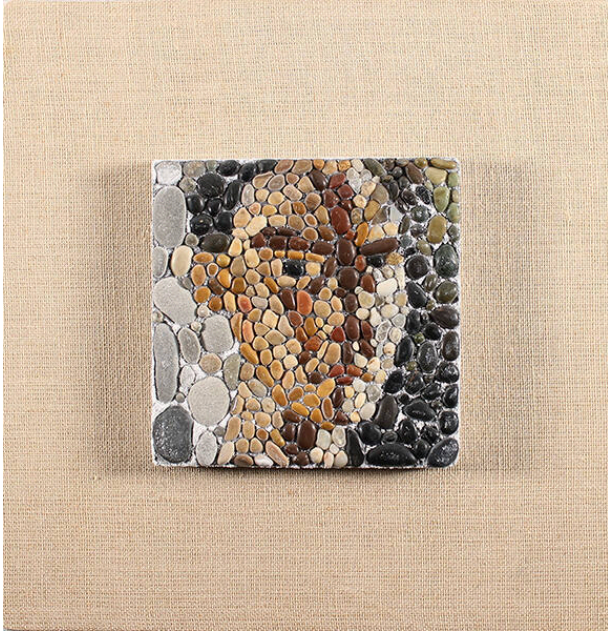


Basic Detail Report



Self portrait

Date

1957

Primary Maker

Frederick Hammersley

Medium

pebbles set in magnesite on canvas on masonite

Description

Portrait of a male head covered in light pebbles. Black pebbles are the hair and brown pebbles are used to accent the eyes, nose and mouth. The subject is facing slightly to the viewers right but the eyes are looking

directly at the viewer. The background is very dark.

Dimensions

Image: 5 1/2 × 5 1/2 in. (14 × 14 cm) Frame: 11 7/8 × 11 1/2 in. (30.2 × 29.2 cm)