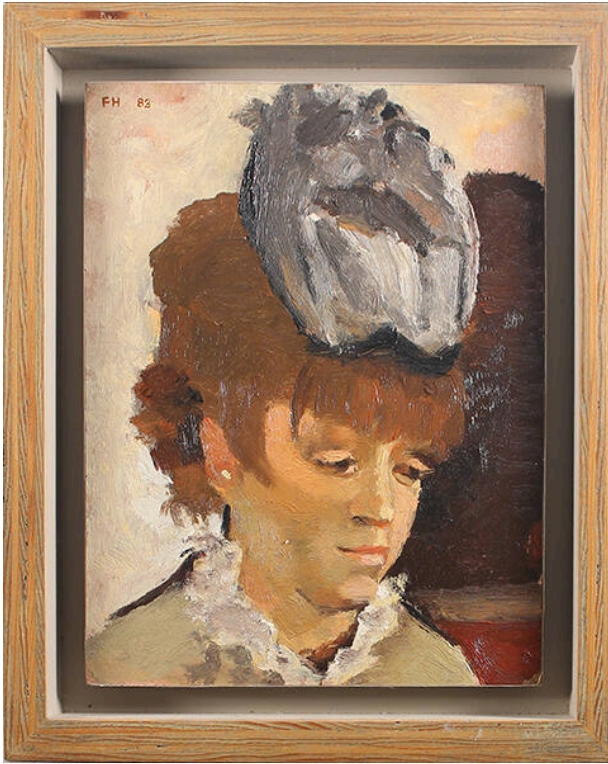


Basic Detail Report



After l'absinthe

Date

1983

Primary Maker

Frederick Hammersley

Medium

oil on Masonite in artist-made frame

Description

Head and shoulders portrait of the female subject in Edgar Degas "L'Absinthe" Subject is wearing a hat, has brown hair and is looking downward and to the viewers right. Her dress has a ruffled collar.

Dimensions

Image: 9 3/4 × 7 3/8 in. (24.8 × 18.7 cm) Support: 9 3/4 × 7 3/8 in. (24.8 × 18.7 cm) Frame: 12 1/8 × 9 7/8 × 1 1/4 in. (30.8 × 25.1 × 3.2 cm)