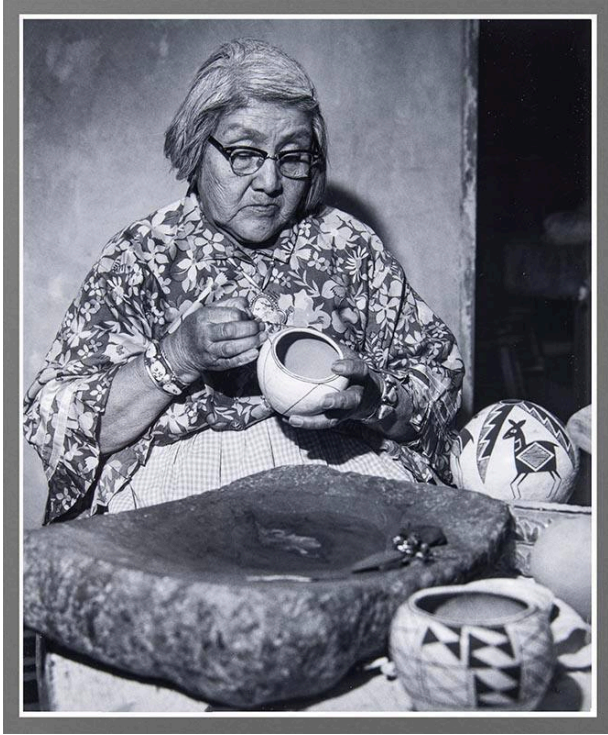


Basic Detail Report



Lucy Lewis

Date

Negative 1961, printed 1985

Primary Maker

Marmon, Lee (Tsa-bee Ya-ka/Speckled Corn)

Medium

gelatin silver print

Description

Lucy Lewis. Portrait of woman with short grey hair and eye glasses wearing floral pattern dress holding pottery vase, bracelet on right wrist, checkered apron, grinding stone on table with other pottery.

Dimensions

Image: 11 1/8 × 9 1/4 in. (28.3 × 23.5 cm) Support: 12 × 10 3/4 in. (30.5 × 27.3 cm) Mat: 17 × 14 1/2 in. (43.2 × 36.8 cm)