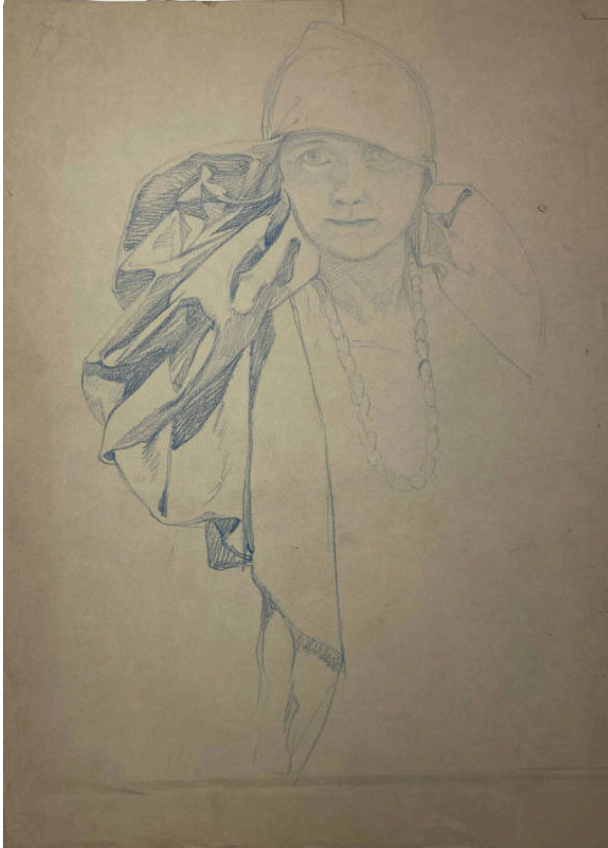


# Basic Detail Report

---



## Untitled

### Date

early 20th-mid 20th Century

### Primary Maker

Eugenie F. Shonnard

### Medium

colored pencil

### Description

Sketch of a woman wearing a scarf on her head and beads around her neck in blue pencil. Believed to be based upon Alphonse Mucha's Slav Epic.

### Dimensions

Image: 17 3/4 x 13 in. (45.1 x 33 cm)