

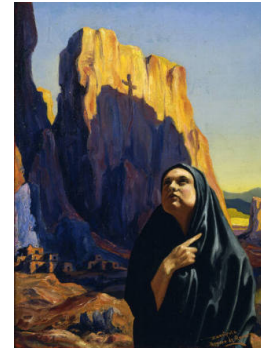
Basic Report



Title: Ann Carol with Iris
Date: 1943
Primary Maker: Henriette Wyeth
Medium: oil on canvas



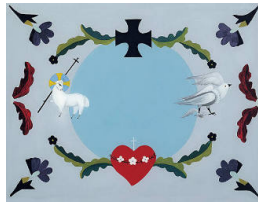
Title: Awakening
Date: 1943
Primary Maker: Agnes Pelton
Medium: oil on canvas



Title: The Black Shawl
Date: 1933
Primary Maker: Esquípula Romero de Romero
Medium: oil on Masonite



Title: Dark and Lavender Leaves
Date: 1931
Primary Maker: Georgia O'Keeffe
Medium: oil on canvas



Title: Divine Lamb and Taos Blue Sky
Date: n.d.
Primary Maker: Rebecca Salsbury (Strand) James
Medium: Reverse painting on glass



Title: Grief
Date: 1917
Primary Maker: Warren E. Rollins
Medium: oil on canvas



Title: Music in the Plaza
Date: 1920
Primary Maker: John Sloan
Medium: oil on canvas



Title: My Gate on the Camino
Date: 1928
Primary Maker: Andrew Dasburg
Medium: oil on panel



Title: New Mexico Landscape
Date: 1938
Primary Maker: Cady Wells
Medium: oil on canvas



Title: Our Washerwoman's Family - New Mexico
Date: circa 1918
Primary Maker: Bert Geer Phillips
Medium: oil on canvas