

# Basic Report

---

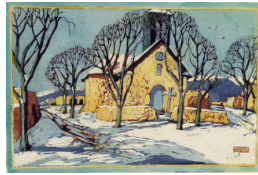


**Title:** Cemetery

**Date:** 1938

**Primary Maker:** Manville Chapman

**Medium:** block print and gouache on paper



**Title:** Church in Northern New Mexico

**Date:** 1938

**Primary Maker:** Manville Chapman

**Medium:** block print and gouache on paper



**Title:** Cottonwoods in Autumn

**Date:** 1938

**Primary Maker:** Manville Chapman

**Medium:** block print and gouache on paper



**Title:** Dry Trees

**Date:** 1938

**Primary Maker:** Manville Chapman

**Medium:** block print and gouache on paper

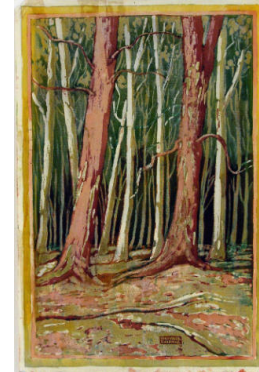


**Title:** Eagle Dance

**Date:** 1938

**Primary Maker:** Manville Chapman

**Medium:** block print and gouache on paper



**Title:** Falling Leaves

**Date:** 1938

**Primary Maker:** Manville Chapman

**Medium:** block print and gouache on paper

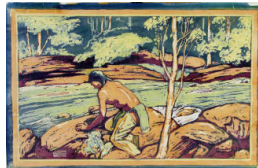


**Title:** Farm Houses

**Date:** 1938

**Primary Maker:** Manville Chapman

**Medium:** block print and gouache on paper



**Title:** Fishing

**Date:** 1938

**Primary Maker:** Manville Chapman

**Medium:** block print and gouache on paper



**Title:** Indian Woman Sitting

**Date:** 1938

**Primary Maker:** Manville Chapman

**Medium:** block print and gouache on paper



**Title:** Morning Sunlight

**Date:** 1938

**Primary Maker:** Manville  
Chapman

**Medium:** block print and  
gouache on paper