

Basic Report



Title: Ann Carol with Iris
Date: 1943
Primary Maker: Henriette Wyeth
Medium: oil on canvas



Title: Apache Mother
Date: circa 1970-1975
Primary Maker: Allan Houser
Medium: marble



Title: Awakening
Date: 1943
Primary Maker: Agnes Pelton
Medium: oil on canvas



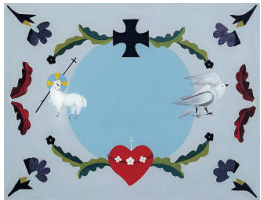
Title: The Black Shawl
Date: 1933
Primary Maker: Esquípula Romero de Romero
Medium: oil on Masonite



Title: Chief Ohiyesa
Communing with the
Great Spirit
Date: 1926
Primary Maker: Eugenie F. Shonnard
Medium: mahogany



Title: Dark and
Lavender Leaves
Date: 1931
Primary Maker: Georgia O'Keeffe
Medium: oil on canvas



Title: Divine Lamb and
Taos Blue Sky
Date: n.d.
Primary Maker: Rebecca Salsbury (Strand) James
Medium: Reverse painting on glass



Title: Grief
Date: 1917
Primary Maker: Warren E. Rollins
Medium: oil on canvas



Title: Music in the Plaza
Date: 1920
Primary Maker: John Sloan
Medium: oil on canvas



Title: My Gate on the Camino

Date: 1928

Primary Maker: Andrew Dasburg

Medium: oil on panel