

# Basic Report

---



**Title:** Aspen Red River (study)  
**Date:** before 1924  
**Primary Maker:** Gustave Baumann  
**Medium:** tempera on paper



**Title:** Big Timber - Upper Pecos  
**Date:** 1920  
**Primary Maker:** Gustave Baumann  
**Medium:** Opaque watercolor



**Title:** Day of the Deer Dance  
**Date:** 1918  
**Primary Maker:** Gustave Baumann  
**Medium:** tempera on paper



**Title:** El Santo (study)  
**Date:** circa 1918  
**Primary Maker:** Gustave Baumann  
**Medium:** Opaque watercolor



**Title:** El Santo (study)  
**Date:** circa 1918  
**Primary Maker:** Gustave Baumann  
**Medium:** tempera on paper



**Title:** Flowers in a Vase, octagonal frame  
**Date:** mid 20th Century  
**Primary Maker:** Gustave Baumann  
**Medium:** Watercolor on paper, painted frame



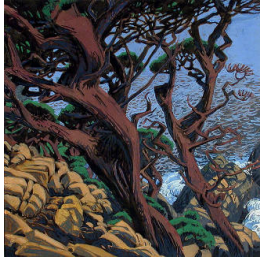
**Title:** Frijoles Canyon  
**Date:** before 1971  
**Primary Maker:** Gustave Baumann  
**Medium:** oil on panel



**Title:** From Hillside Gardens (study)  
**Date:** before 1941  
**Primary Maker:** Gustave Baumann  
**Medium:** tempera on paper



**Title:** Ghost Ranch  
**Date:** 1940  
**Primary Maker:** Gustave Baumann  
**Medium:** oil on panel



**Title:** Monterey  
Cypress (study)

**Date:** before 1936

**Primary Maker:** Gustave  
Baumann

**Medium:** tempera and  
graphite on paper