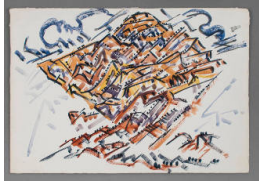


# Basic Report

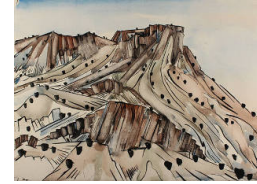
---



**Title:** Abiquiu - Ghost Ranch Country  
**Date:** 1933  
**Primary Maker:** Cady Wells  
**Medium:** watercolor



**Title:** Abstract Study  
**Date:** 1933  
**Primary Maker:** Cady Wells  
**Medium:** watercolor



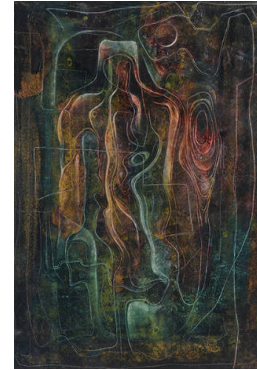
**Title:** Barranca (New Mexico Landscape)  
**Date:** circa 1934  
**Primary Maker:** Cady Wells  
**Medium:** watercolor on paper



**Title:** Blue Whirlpool Study  
**Date:** n.d.  
**Primary Maker:** Cady Wells  
**Medium:** watercolor on paper



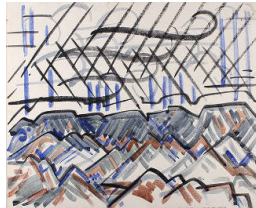
**Title:** Buchman Mesa - Otowi  
**Date:** circa 1935  
**Primary Maker:** Cady Wells  
**Medium:** watercolor on paper



**Title:** Confused Memory  
**Date:** n.d.  
**Primary Maker:** Cady Wells  
**Medium:** watercolor on paper



**Title:** Dark Mesas  
**Date:** 1933  
**Primary Maker:** Cady Wells  
**Medium:** watercolor on paper



**Title:** Dark Mesas  
**Date:** 1933  
**Primary Maker:** Cady Wells  
**Medium:** watercolor on paper



**Title:** Head of Santo  
**Date:** circa 1939  
**Primary Maker:** Cady Wells  
**Medium:** oil and watercolor on paper



**Title:** Landscape

**Date:** 1933

**Primary Maker:** Cady Wells

**Medium:** watercolor on  
paper