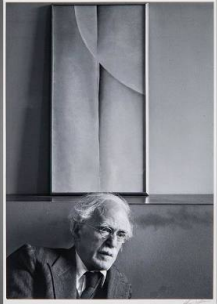


# Basic Report

---



**Title:** Alfred Stieglitz and Painting by Georgia O'Keeffe, at An American Place, New York City  
**Date:** 1944 (printed 1981)  
**Primary Maker:** Ansel Adams  
**Medium:** gelatin silver print



**Title:** Annette Rosenshine, San Francisco  
**Date:** circa 1932  
**Primary Maker:** Ansel Adams  
**Medium:** gelatin silver print



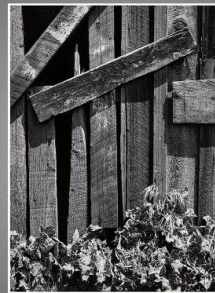
**Title:** Aspens, Northern New Mexico  
**Date:** 1958 (printed 1980)  
**Primary Maker:** Ansel Adams  
**Medium:** gelatin silver print



**Title:** Aspens, Northern New Mexico  
**Date:** 1958 (printed later)  
**Primary Maker:** Ansel Adams  
**Medium:** gelatin silver print



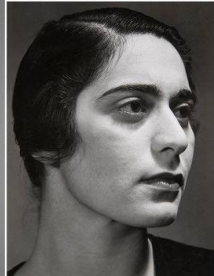
**Title:** At Sunrise Crater National Monument, Arizona  
**Date:** 1947  
**Primary Maker:** Ansel Adams  
**Medium:** vintage gelatin silver print



**Title:** Boards and Thistles  
**Date:** circa 1932  
**Primary Maker:** Ansel Adams  
**Medium:** gelatin silver print



**Title:** Bridalveil Fall, Yosemite Valley, California  
**Date:** 1927 (printed 1981)  
**Primary Maker:** Ansel Adams  
**Medium:** gelatin silver print



**Title:** Carolyn Anspacher, San Francisco  
**Date:** 1932  
**Primary Maker:** Ansel Adams  
**Medium:** gelatin silver print



**Title:** Clearing Winter Storm, Yosemite National Park, California  
**Date:** 1944 (printed 1980)  
**Primary Maker:** Ansel Adams  
**Medium:** gelatin silver print



**Title:** Cypress and Fog,  
Pebble Beach,  
California

**Date:** 1967 (printed 1979)

**Primary Maker:** Ansel

Adams

**Medium:** gelatin silver print