

Basic Report



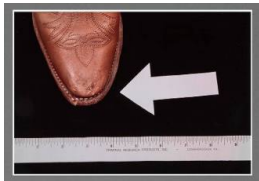
Title: Exhibit A:
Oriental Rug Chewed
(from the series Crime
in the Home)
Date: 1982
Primary Maker: Betty Hahn
Medium: silver-dye bleach
print



Title: Exhibit B:
Moccasin Attacked
(from the series Crime
in the Home)
Date: 1982
Primary Maker: Betty Hahn
Medium: silver-dye bleach
print



Title: Exhibit C: **Second
Oriental Rug Chewed**
(from the series Crime
in the Home)
Date: 1982
Primary Maker: Betty Hahn
Medium: silver-dye bleach
print



Title: Exhibit D: **Boot
Toe Punctures** (from
the series Crime in the
Home)
Date: 1982
Primary Maker: Betty Hahn
Medium: silver-dye bleach
print



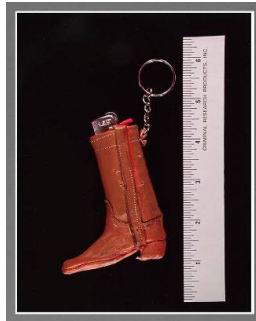
Title: Exhibit E:
Underwear, Molested
(from the series Crime
in the Home)
Date: 1982
Primary Maker: Betty Hahn
Medium: silver-dye bleach
print



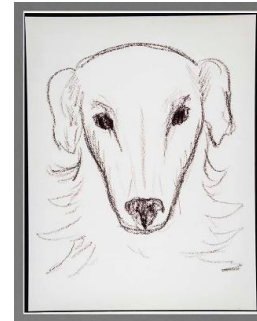
Title: Exhibit F: **Salt
Shaker, Destroyed**
(from the series Crime
in the Home)
Date: 1982
Primary Maker: Betty Hahn
Medium: silver-dye bleach
print



Title: Exhibit G:
**Cowboy Boot,
Assaulted** (from the
series Crime in the
Home)
Date: 1982
Primary Maker: Betty Hahn
Medium: silver-dye bleach
print



Title: Exhibit H:
**Cowboy Boot, Lighter,
Assaulted** (from the
series Crime in the
Home)
Date: 1982
Primary Maker: Betty Hahn
Medium: silver-dye bleach
print



Title: Exhibit I: **Police
Sketch of Suspect**
(from the series Crime
in the Home)
Date: 1982
Primary Maker: Betty Hahn
Medium: silver-dye bleach
print



**Title: Exhibit J: Suspect
in Fingerprint Lab
(from the series Crime
in the Home)**

Date: 1982

Primary Maker: Betty Hahn

Medium: silver-dye bleach
print