

# Basic Report

---



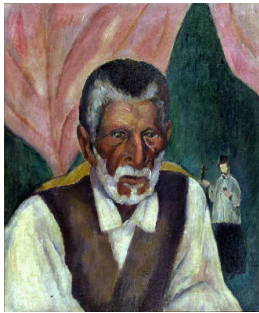
**Title:** Artist's Wife,  
Natalie Curtis Burlin  
**Date:** 1913-1920  
**Primary Maker:** Paul Burlin  
**Medium:** color pencil



**Title:** Cattle  
**Date:** circa 1917  
**Primary Maker:** Paul Burlin  
**Medium:** pen, pencil and  
watercolor on paper



**Title:** Rhapsody  
**Date:** 1912  
**Primary Maker:** Paul Burlin  
**Medium:** oil on panel



**Title:** The Sacristan of  
Trampas  
**Date:** 1918  
**Primary Maker:** Paul Burlin  
**Medium:** oil on canvas



**Title:** Stone Age (part 1)  
**Date:** 1912  
**Primary Maker:** Paul Burlin  
**Medium:** oil on canvas  
mounted on paperboard



**Title:** Stone Age (part 2)  
**Date:** 1912  
**Primary Maker:** Paul Burlin  
**Medium:** oil on canvas  
mounted on paperboard



**Title:** Untitled  
**Date:** 1917  
**Primary Maker:** Paul Burlin  
**Medium:** pencil and  
watercolor wash on paper



**Title:** Untitled (Figures  
in a Landscape)  
**Date:** n.d.  
**Primary Maker:** Paul Burlin  
**Medium:** oil on Masonite



**Title:** Untitled (Indian  
Ceremonial Dance)  
**Date:** n.d.  
**Primary Maker:** Paul Burlin  
**Medium:** oil on canvas



**Title:** Untitled (Nudes  
in Landscape with  
House)

**Date:** n.d.

**Primary Maker:** Paul Burlin

**Medium:** oil on canvas  
mounted on Masonite