

Basic Report



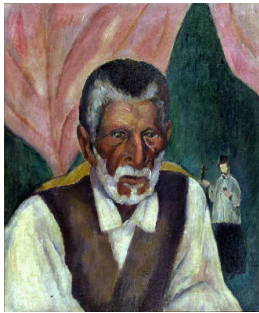
Title: Artist's Wife,
Natalie Curtis Burlin
Date: 1913-1920
Primary Maker: Paul Burlin
Medium: color pencil



Title: Cattle
Date: circa 1917
Primary Maker: Paul Burlin
Medium: pen, pencil and
watercolor on paper



Title: Rhapsody
Date: 1912
Primary Maker: Paul Burlin
Medium: oil on panel



Title: The Sacristan of
Trampas
Date: 1918
Primary Maker: Paul Burlin
Medium: oil on canvas



Title: Stone Age (part 1)
Date: 1912
Primary Maker: Paul Burlin
Medium: oil on canvas
mounted on paperboard



Title: Stone Age (part 2)
Date: 1912
Primary Maker: Paul Burlin
Medium: oil on canvas
mounted on paperboard



Title: Untitled
Date: 1917
Primary Maker: Paul Burlin
Medium: pencil and
watercolor wash on paper



Title: Untitled (Figures
in a Landscape)
Date: n.d.
Primary Maker: Paul Burlin
Medium: oil on Masonite



Title: Untitled (Indian
Ceremonial Dance)
Date: n.d.
Primary Maker: Paul Burlin
Medium: oil on canvas



Title: Untitled (Nudes
in Landscape with
House)

Date: n.d.

Primary Maker: Paul Burlin

Medium: oil on canvas
mounted on Masonite