

# Basic Report

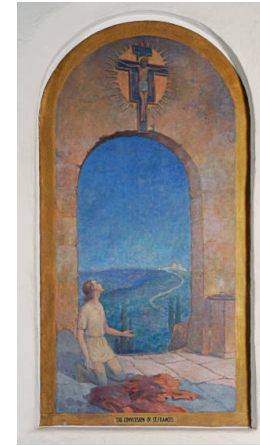
---



**Title:** Apotheosis of St. Francis  
**Date:** 1917  
**Primary Maker:** Donald Beauregard  
**Medium:** oil on canvas



**Title:** Buildings of the School of American Archaeology  
**Date:** before 1916  
**Primary Maker:** Kenneth Chapman  
**Medium:** watercolor on illustration board



**Title:** Conversion of St. Francis  
**Date:** 1917  
**Primary Maker:** Donald Beauregard  
**Medium:** Oil on canvas



**Title:** Migraine  
**Date:** n.d.  
**Primary Maker:** Kenneth Chapman  
**Medium:** casein on paper



**Title:** New Art Museum, Santa Fe - East Front  
**Date:** before 1916  
**Primary Maker:** Kenneth Chapman  
**Medium:** watercolor on paper



**Title:** New Art Museum, Santa Fe - South Front  
**Date:** 1916  
**Primary Maker:** Kenneth Chapman  
**Medium:** watercolor on paper



**Title:** Portrait  
**Date:** ca. 1924  
**Primary Maker:** Kenneth Chapman  
**Medium:** collage with paint on cardboard



**Title:** Renunciation of Santa Clara  
**Date:** 1917  
**Primary Maker:** Donald Beauregard  
**Medium:** Oil on canvas



**Title:** Siesta  
**Date:** n.d.  
**Primary Maker:** Kenneth Chapman  
**Medium:** mixed media on wallboard



**Title:** Sketch for mural  
**"The Apotheosis of St.  
Francis"**

**Date:** before 1917

**Primary Maker:** Kenneth  
Chapman

**Medium:** charcoal on paper