

# Basic Report

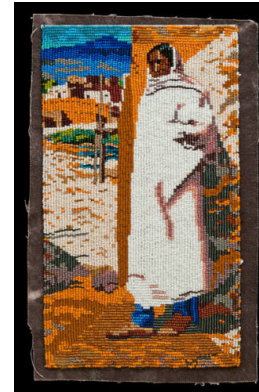
---



**Title:** Letter from the Hotel Chelsea  
**Date:** 1979  
**Primary Maker:** Betty Hahn  
**Medium:** screen print on cotton



**Title:** Untitled (Geronimo/Goyathlay)  
**Date:** 20th Century  
**Primary Maker:** Joseph Kahze  
**Medium:** beadwork on canvas



**Title:** Back to the Blanket  
**Date:** 2008  
**Primary Maker:** Marcus Amerman  
**Medium:** size 13 cut beads on fabric



**Title:** Arroyo Seco #3  
**Date:** 2002  
**Primary Maker:** Martha Opdahl  
**Medium:** tufted and sheared wool pile, acid dyes and cotton backing