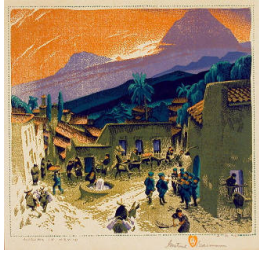


# Basic Report

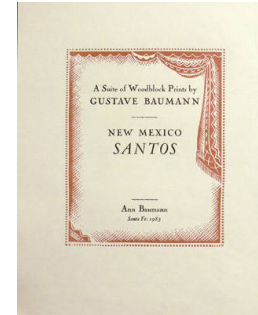
---



**Title:** Morning in Mexico  
**Date:** 1934  
**Primary Maker:** Gustave Baumann  
**Medium:** color woodcut



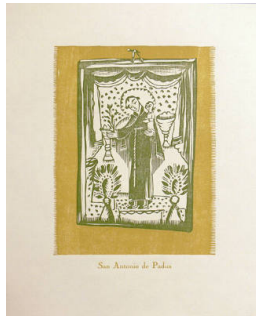
**Title:** The Shalako  
**Date:** 1923  
**Primary Maker:** Gustave Baumann  
**Medium:** oil on board with hand carved wooden frame



**Title:** Title Page (from New Mexico Santos)  
**Date:** circa 1928 (printed 1983)  
**Primary Maker:** Gustave Baumann  
**Medium:** color woodcut



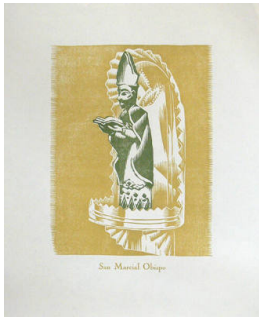
**Title:** San Francisco de Assisi (from New Mexico Santos)  
**Date:** circa 1928 (printed 1983)  
**Primary Maker:** Gustave Baumann  
**Medium:** color woodcut



**Title:** San Antonio de Padua (from New Mexico Santos)  
**Date:** circa 1928 (printed 1983)  
**Primary Maker:** Gustave Baumann  
**Medium:** color woodcut



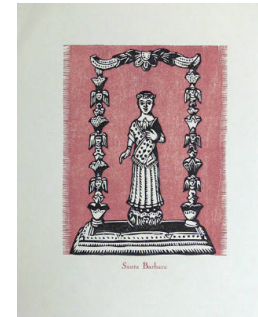
**Title:** Nuestra Senora de Carmel (from New Mexico Santos)  
**Date:** circa 1928 (printed 1983)  
**Primary Maker:** Gustave Baumann  
**Medium:** color woodcut



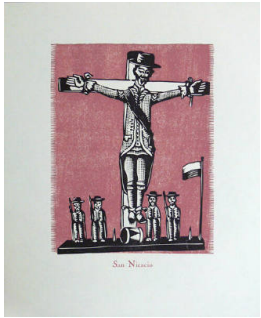
**Title:** San Marcial Obispo (from New Mexico Santos)  
**Date:** circa 1928 (printed 1983)  
**Primary Maker:** Gustave Baumann  
**Medium:** color woodcut



**Title:** Trinidad (from New Mexico Santos)  
**Date:** circa 1928 (printed 1983)  
**Primary Maker:** Gustave Baumann  
**Medium:** color woodcut



**Title:** Santa Barbara (from New Mexico Santos)  
**Date:** circa 1928 (printed 1983)  
**Primary Maker:** Gustave Baumann  
**Medium:** color woodcut



**Title:** San Nicacio (from  
**New Mexico Santos)**

**Date:** circa 1928 (printed  
1983)

**Primary Maker:** Gustave  
Baumann

**Medium:** color woodcut