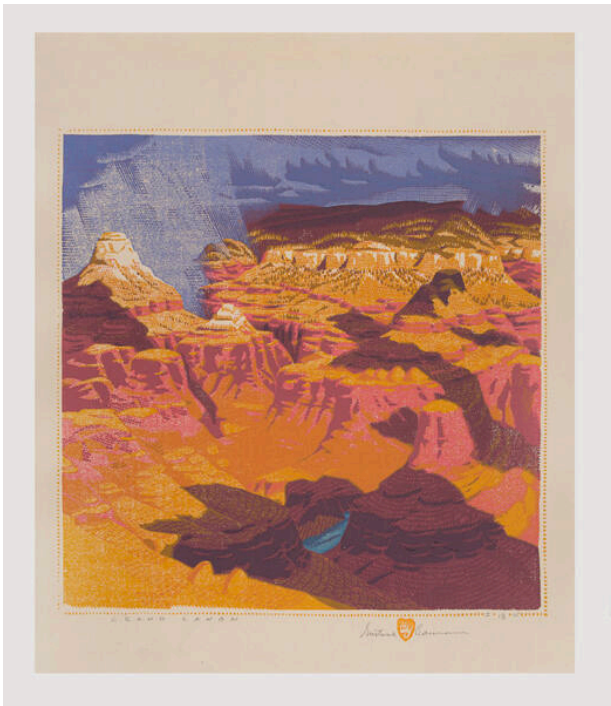


# Basic Detail Report

---



## Grand Canyon

**Date**

1934

**Primary Maker**

Gustave Baumann

**Medium**

color woodcut

**Description**

View of the Grand Canyon from rim to rim; orange, pink, purple, yellow rock cliffs, short segment of blue river at bottom; walking rain at upper left corner

**Dimensions**

Image: 12 11/16 x 12 13/16 in. (32.2 x 32.5 cm) Support: 16 15/16 x 14 5/16 in. (43 x 36.4 cm) Mat: 24 x 20 in. (61 x 50.8 cm)