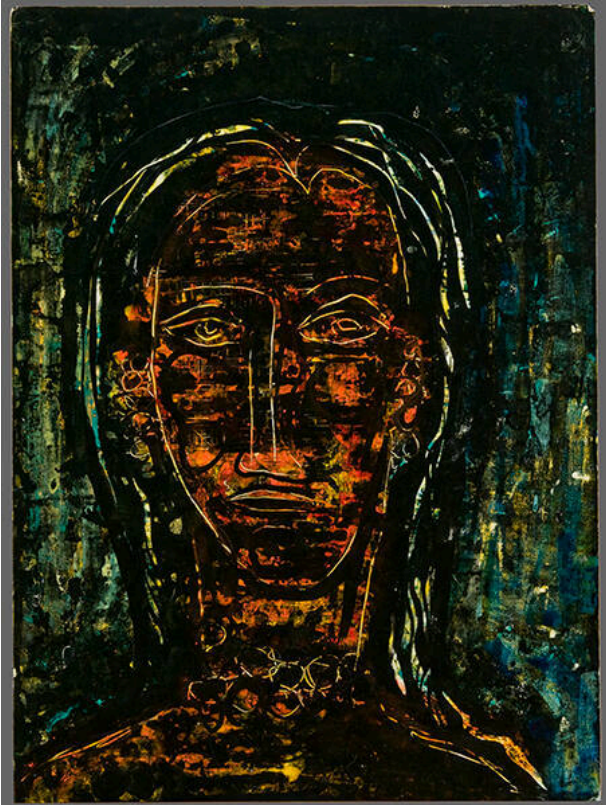


# Basic Detail Report

---



## Portrait of E #2

### Date

circa 1952

### Primary Maker

Cady Wells

### Medium

gouache impasto on paperboard

### Description

Abstract head and shoulder portrait of woman facing viewer

with black background. Long oval face in black, orange outlined in yellow w/yellow eyes, nose & mouth. Hooped earrings & yellow circles for necklace. Shoulder length black hair.

### Dimensions

Image: 30 × 21 7/8 in. (76.2 × 55.6 cm) Support: 30 × 21 7/8 in. (76.2 × 55.6 cm) Mat: 36 × 28 in. (91.4 × 71.1 cm)