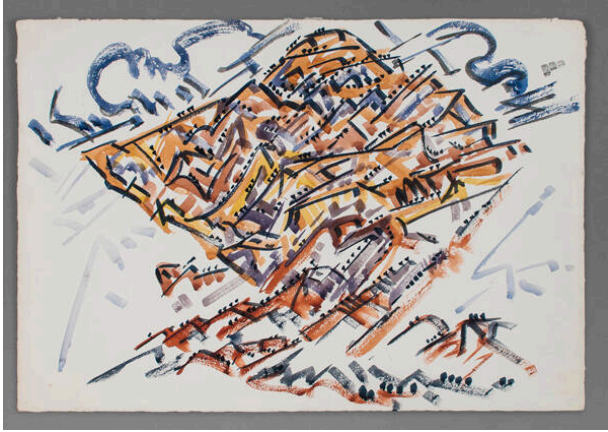


# Basic Detail Report

---



## Abiquiu - Ghost Ranch Country

**Date**

1933

**Primary Maker**

Cady Wells

### Medium

watercolor

### Description

Mountain landscape. Tan mountain outlined in black accented by blue/gray. Yellow highlights in mid-section of mountain. Fleck marks throughout representing pinon trees. Gray wispy clouds. All on white background.

### Dimensions

Image: 15 1/4 × 21 5/8 in. (38.7 × 54.9 cm) Support: 15 3/8 × 22 3/8 in. (39.1 × 56.8 cm) Mat: 22 × 28 in. (55.9 × 71.1 cm)