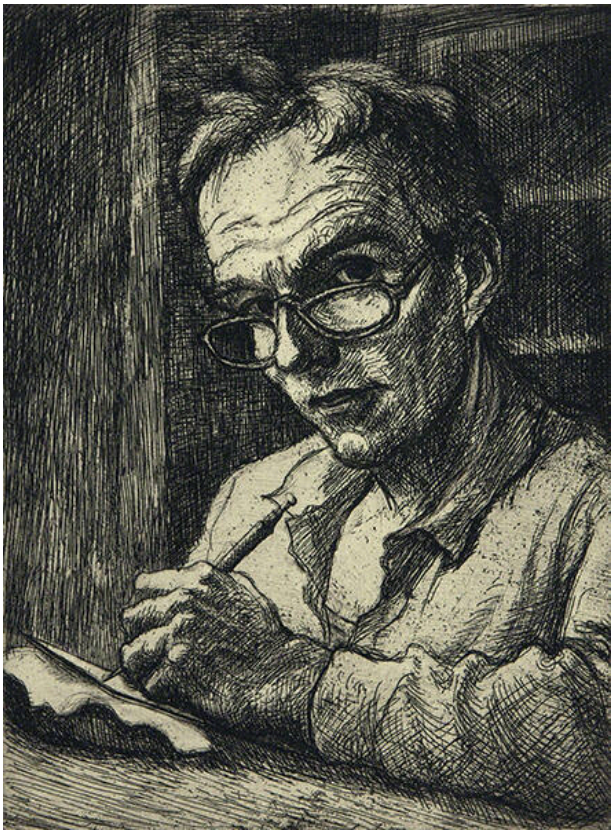


Basic Detail Report



Self-Portrait

Date

1990-1994

Primary Maker

Eli Levin

Medium

etching

Description

Man wearing glasses with head and gave turned toward viewer, holding an etching needle and plate.

Dimensions

Image: 7 7/8 × 5 7/8 in. (20 × 14.9 cm) Plate Mark: 7 7/8 × 5 7/8 in. (20 × 14.9 cm) Support: 15 1/8 × 10 15/16 in. (38.4 × 27.8 cm) Mat: 17 × 14 in. (43.2 × 35.6 cm)