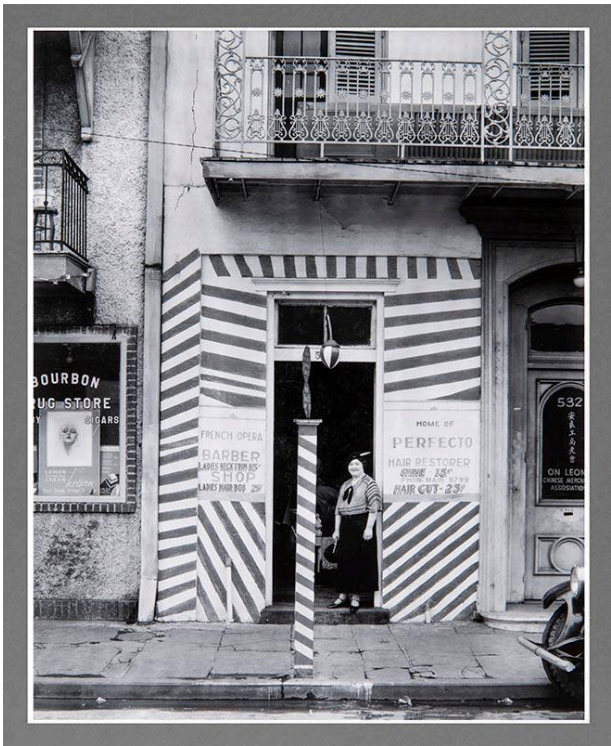


# Basic Detail Report



## Sidewalk and Shopfront, New Orleans

### Date

1936 (printed later)

### Primary Maker

Walker Evans

### Medium

Gelatin silver print

### Description

Image of a store front with a woman standing in the doorway, a

balcony above shop door, barber shop pole in center of image.

### Dimensions

Image: 9 1/2 × 7 1/2 in. (24.1 × 19.1 cm) Support: 18 × 16 in. (45.7 × 40.6 cm) Mat: 20 × 16 in. (50.8 × 40.6 cm)