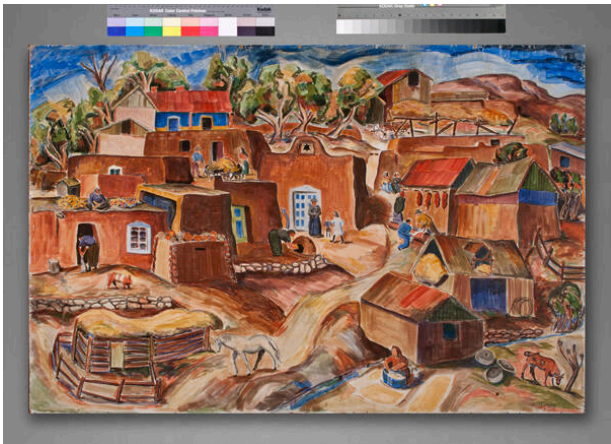


Basic Detail Report



Spanish Village

Date

1934

Primary Maker

William Lumpkins

Medium

watercolor and pencil on plaster on board

Description

Village scene with corral along left edge; church in center; people and horses throughout

Dimensions

Image: 48 × 72 1/2 in. (121.9 × 184.2 cm) Support: 48 × 72 1/2 in. (121.9 × 184.2 cm) Frame: 49 9/16 × 73 13/16 × 1 11/16 in. (125.9 × 187.5 × 4.3 cm)