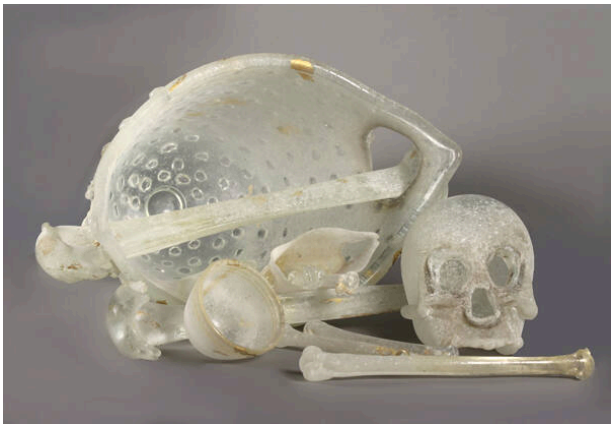


Basic Detail Report



Artifact Still Life

Date

1990

Primary Maker

William Morris

Medium

blown glass; clear with 'scavo' and gold leaf

Description

A group of 12 glass pieces consisting of seven human-like bones, a small cup, a skull, a saw-like curved blade, a small tapered vase and a large hobnail basket. The glass is gradual shades of clear to a frosted white with interspersed sections of gold leaf throughout the various pieces.

Dimensions

(variable): 18 × 28 × 36 in. (45.7 × 71.1 × 91.4 cm) a: 1 3/4 × 11 3/4 × 2 1/8 in. (4.4 × 29.8 × 5.4 cm) b: 1 3/8 × 7 1/8 × 1 1/2 in. (3.5 × 18.1 × 3.8 cm) c: 1 1/4 × 7 3/8 × 1 1/8 in. (3.2 × 18.7 × 2.9 cm) d: 1 1/4 × 7 15/16 × 1 3/8 in. (3.2 × 20.2 × 3.5 cm) e: 1 1/4 × 6 3/4 × 1 1/4 in. (3.2 × 17.1 × 3.2 cm) f: 4 1/4 × 19 3/4 × 4 in. (10.8 × 50.2 × 10.2 cm) g: 4 1/2 × 20 1/2 × 6 in. (11.4 × 52.1 × 15.2 cm) h: 3 1/4 × 4 1/4 in. (8.3 × 10.8 cm) i: 9 3/4 × 6 1/4 × 3 in. (24.8 × 15.9 × 7.6 cm) j: 1 1/4 × 17 1/8 × 6 in. (3.2 × 43.5 × 15.2 cm) k: 7 1/4 × 5 3/4 × 7 3/4 in. (18.4 × 14.6 × 19.7 cm) l: 13 1/8 × 18 1/4 × 22 1/2 in. (33.3 × 46.4 × 57.2 cm)