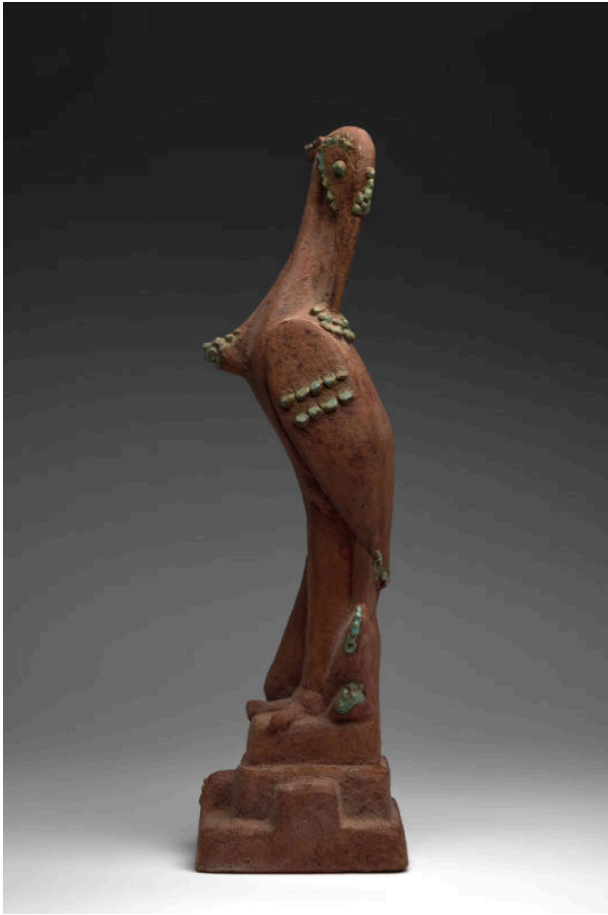


Basic Detail Report



Untitled Sculpture (Crane)

Date

n.d.

Primary Maker

Eugenie F. Shonnard

Medium

clay, paint

Description

Dark brown sculpture of a tall crane-like bird. The head of the crane is facing the back and the beak is tucked into the neck.

The wings, back, eyes, front of the chest, near the legs and feet

are all decorated with small circular areas in green glaze. There is a six-petaled flower on the front (?) of the base with a hole in the center.

Dimensions

18 1/2 × 5 1/4 × 5 in. (47 × 13.3 × 12.7 cm)