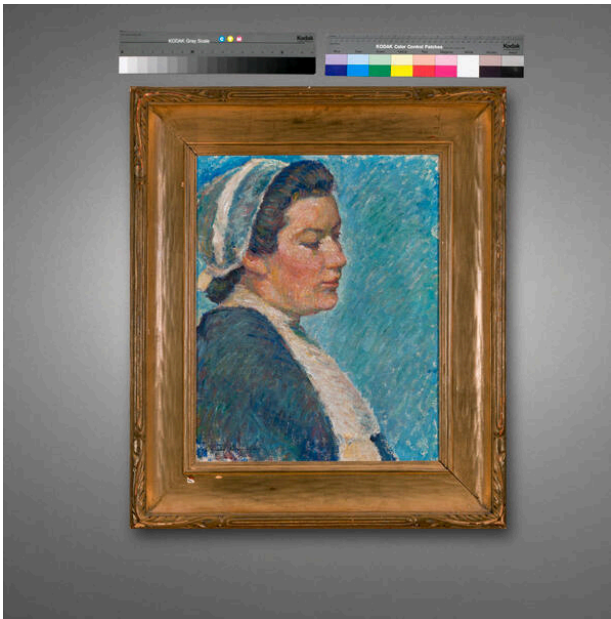


Basic Detail Report



Peasant Girl

Date

circa 1912

Primary Maker

Donald Beauregard

Medium

oil on canvas

Description

Head and should portrait 3/4 facing away from viewer, wearing dark shawl with white lace at neck and white peasant bonnet, blue background.

Dimensions

Image: 16 x 12 1/2 in. (40.6 x 31.8 cm) Frame: 22 1/2 x 19 1/2 x 2 in. (57.2 x 49.5 x 5.1 cm)