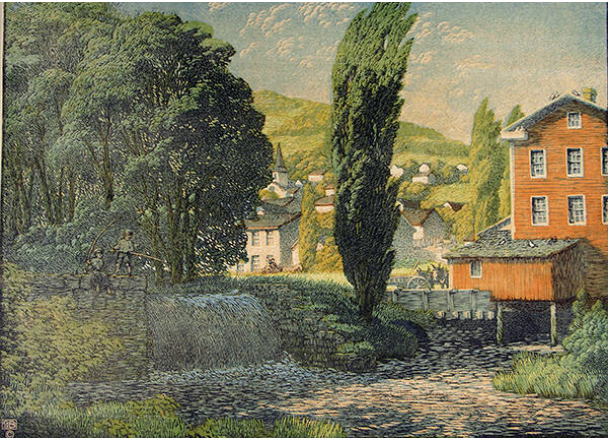


Basic Detail Report



The Mill Pond

Date

1913

Primary Maker

Gustave Baumann

Medium

color woodcut

Description

Three story wood structures with seven windows plus one story addition situated at river's edge at right edge of image. At left side is a stone wall between which a waterfall runs. Two boys sit upon stone wall fishing. Village in background.

Dimensions

Image: 25 1/8 × 34 in. (63.8 × 86.4 cm) Support: 26 1/4 × 35 in. (66.7 × 88.9 cm) Mat: 36 1/2 × 44 1/2 in. (92.7 × 113 cm)