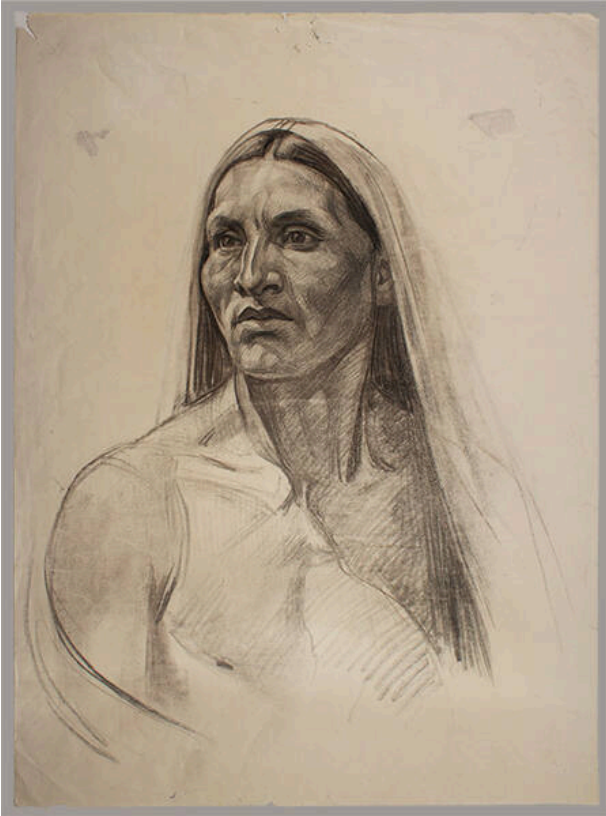


Basic Detail Report



Ben Marcus

Date

n.d.

Primary Maker

Joseph A. Imhof

Medium

charcoal and pencil on laid paper

Description

3/4 view head and shoulder. Head turned slightly left. Blanket over head and right shoulder.

Dimensions

Image: 21 × 17 1/4 in. (53.3 × 43.8 cm) Support: 25 × 18 7/8 in. (63.5 × 47.9 cm) Mat: 28 × 22 in. (71.1 × 55.9 cm)