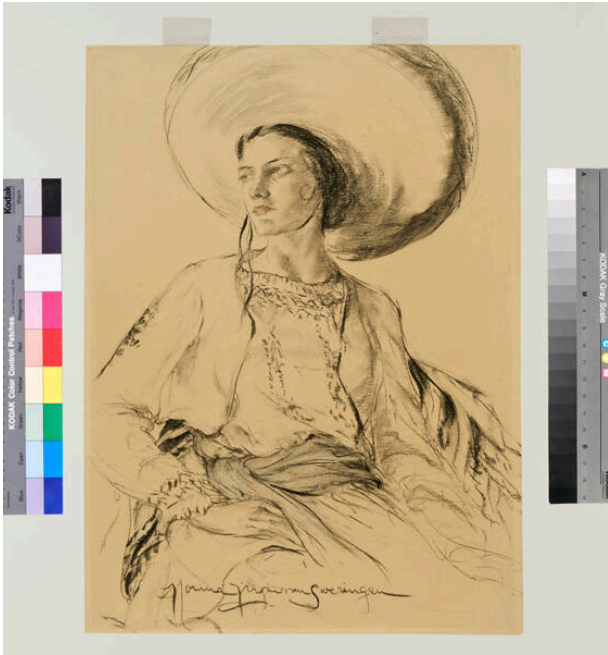


# Basic Detail Report

---



## Untitled Portrait of Woman

### Date

n.d.

### Primary Maker

Norma van Sweringen

### Medium

lithographic crayon and pastel on paper

### Description

3/4 length portrait of woman sitting w/her head turned to L of image. She wears large sombrero. Her dress has designs around neck line, a wide sash tied around waist. A long sleeve, open jacket over dress. Her proper R hand rest on her lap.

### Dimensions

Image: 20 1/2 × 14 15/16 in. (52.1 × 37.9 cm) Support: 20 1/2 × 14 15/16 in. (52.1 × 37.9 cm) Mat: 28 x 22 in. (71.1 x 55.9 cm)