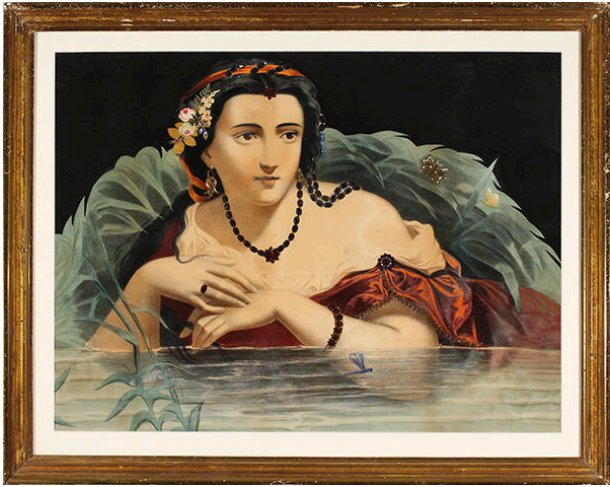


Basic Detail Report



L'Eau

Date

circa 1850 (embellished later)

Primary Maker

Unknown Maker

Medium

hand colored lithograph, paint, embellishments

Description

The lithograph is the portrait of woman that has been embellished with decorative tinsel decals. The woman represents the element of water. She has dark hair and is wearing a Victorian style, taffeta red dress. Red ribbons and flowers decorate her hair and she wears a red necklace, bracelet and ring. She is leaning, elbow deep in a pool of clear water and is surrounded by a ring of green leaves.

Dimensions

Image: 21 1/2 × 27 in. (54.6 × 68.6 cm)