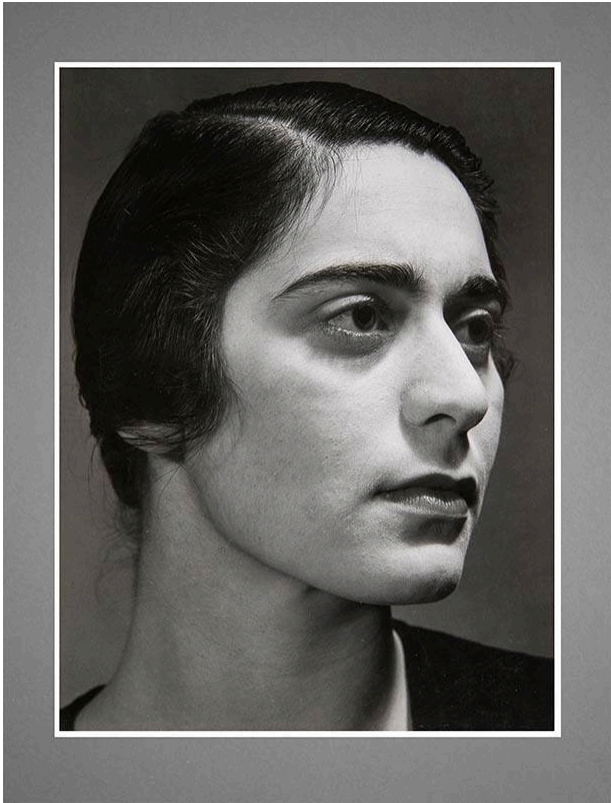


Basic Detail Report



Carolyn Anspacher, San Francisco

Date

1932

Primary Maker

Ansel Adams

Medium

Gelatin silver print

Description

Portrait head of woman with dark hair, face turned to right

edge of photo; young woman has straight eyebrows and wears lipstick. Left shoulder is partially visible in right corner

Dimensions

Image: 8 1/2 × 6 3/8 in. (21.6 × 16.2 cm) Support: 18 1/2 × 14 in. (47 × 35.6 cm) Mat: 20 × 16 in. (50.8 × 40.6 cm)